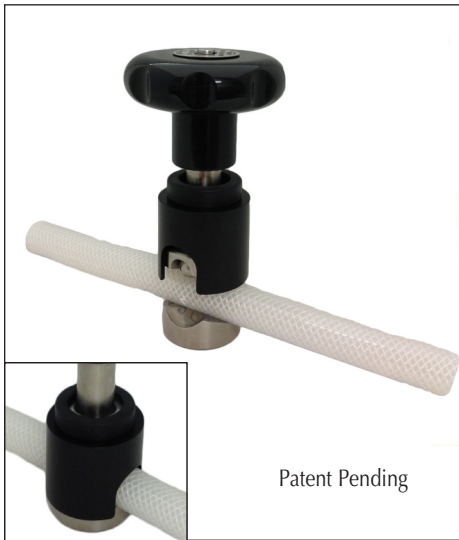




Igenix® Pinch Valves

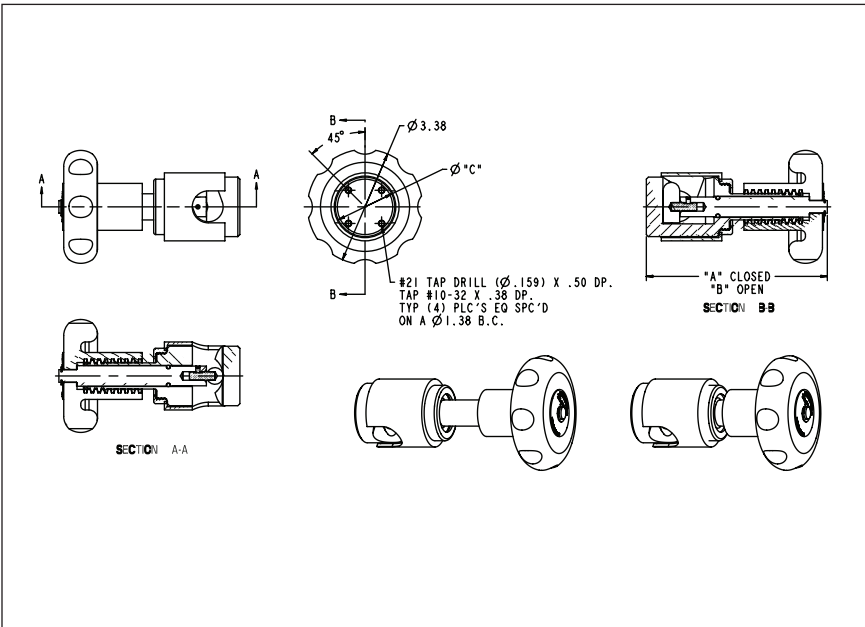
for Imperial and Metric tube sizes

PBM Pinch Valves shut off media flow by exerting a clamping force on your existing flexible braided and clear tubing.



Features:

- ❑ PBM's unique design offers true "Fail Closed" without air-assist for flexible tubing sizes up to and including 1", 25.4 mm ID.
- ❑ Fits over existing tubing without the need for process breaks.
- ❑ Has absolutely no contact with any process media, thus will never introduce contaminants.
- ❑ Designed to function with actuator pressure as low as 60 PSIG, 4.1 barg with a variety of optional limit switches. Can be fitted with limit switches and/or position sensors for your monitoring/flow control needs.
- ❑ Modular safety cover shields the pinch area when the valve is in service. It can be opened to load/unload the valve without the need for process breaks or complete removal from the valve body.



Pinch Valve (Manually Operated) for reference

	Tube ID	Dimension		
		A	B	C
inches	≤ 1/2"	5.32	6.20	1.75
mm	≤ 12.7	135.1	157.5	44.5
inches	> 1/2" ≤ 1"	6.32	7.70	2.25
mm	> 12.7 ≤ 25.4	160.5	195.6	57.2

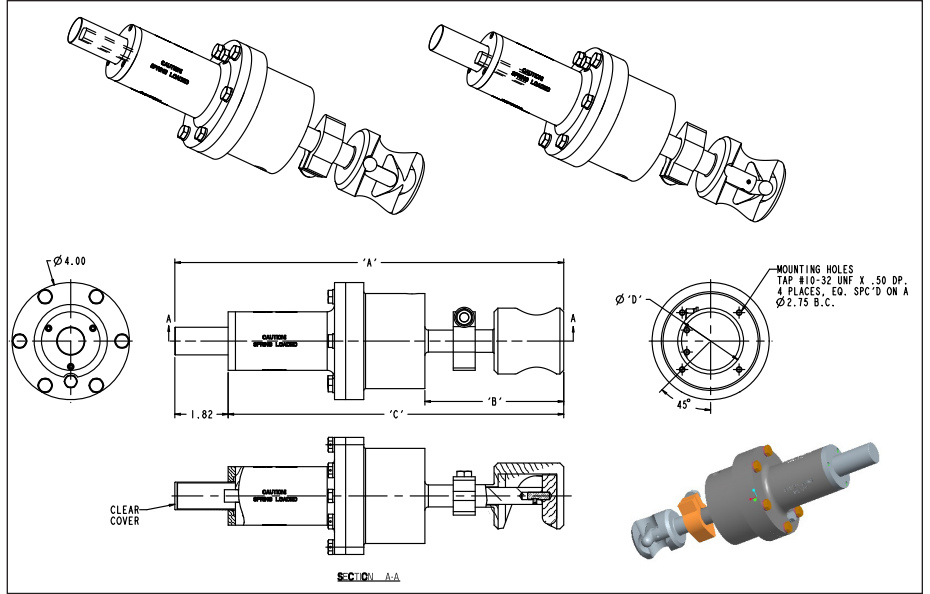
Pinch Valve Applications:

Manual Valves

- ❑ Shut off valves on Bag totes
- ❑ Manual flow control on bench top UF systems

Automated Valves:

- ❑ On/Off valves on automated UF and Chromatography skids
- ❑ Valves with positioners for flow and pressure control on automated UF and Chromatography skids



Pinch Valve (Pneumatically Operated) for reference

	Tube ID	Dimensions			
		A	B	C	D
in.	≤ 1/2"	11.80	4.24	9.98	1.75
mm	≤ 12.7	299.7	107.7	253.5	44.5
in.	> 1/2" ≤ 1"	13.29	4.74	11.47	2.25
mm	> 12.7 ≤ 25.4	337.6	120.4	291.3	57.2

To find your local PBM representative or for more information about PBM valves, visit www.pbmvalve.com or call us at 1-800-967-4PBM.

How to order

Model	Material	Size (Tubing size ref ID)	Series	Operator	Ext. Finish
PV	HL	C = 0.062 to .50 tubing	1	MV = Manual	- = machine finish (50 Ra max) (std finish)
Igenix Pinch Valve	316 Stainless Steel	E = 0.625 to 1.0		AV = Automated stainless, spring return, (60-200 psig supply air/gas)	C = 32 Ra
				AO = A- with manual override	L = 32 Ra + electro-polish
				AS = A- with inductive proximity switch	(Hardware is not polished.)

PBM WORLDWIDE REPRESENTATION

- United States • Canada • Australia • Mexico • Brazil • Argentina • Chile • UAE • United Kingdom
- Central Europe • Germany • Sweden • Spain • Belgium • France • Ireland • Switzerland • Austria • The Netherlands
- South Africa • India • Taiwan • China • Thailand • Singapore • Saudi Arabia • Malaysia • South Korea



www.PBMValve.com

PBM, Inc. • 1070 Sandy Hill Road, Irwin, PA 15642
 Phone: 800.967.4PBM • 724.863.0550 • Fax: 724.864.9255
 E-mail: info@pbmvalve.com

