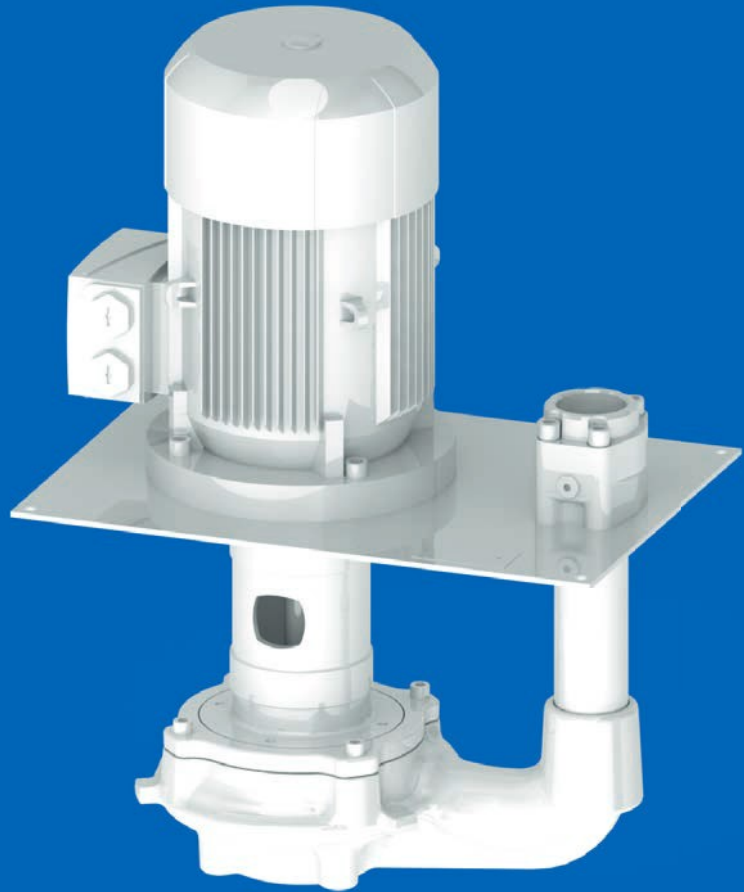


Clean coolant pumps

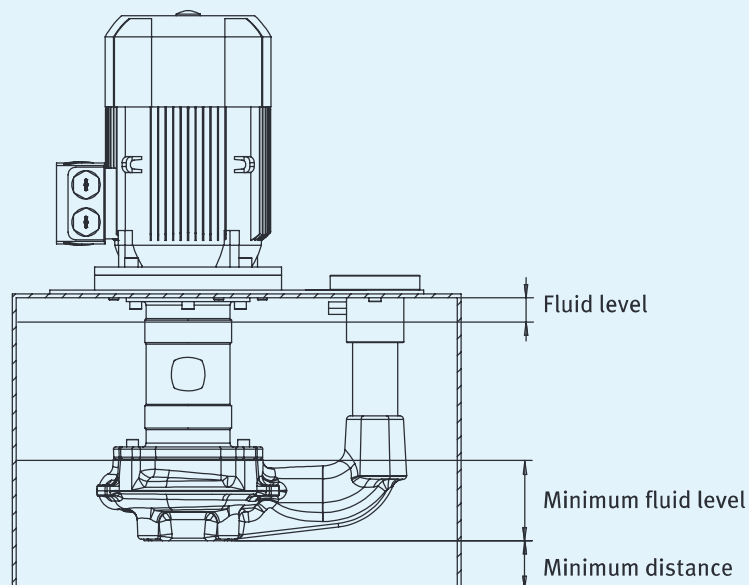
KNOLL clean coolant pumps TG are cooling lubricant pumps that convey slightly contaminated media. These pumps are able to supply machines with cleaned cooling lubricant (incl. residual dirt).

Properties

- No seal
- Flexible design with standard motor
- Energy efficient in conjunction with frequency converter
- Very high efficiency thanks to favorably shaped impeller for optimal flow behavior
- Impeller material POM/GJL-250



Dimensions



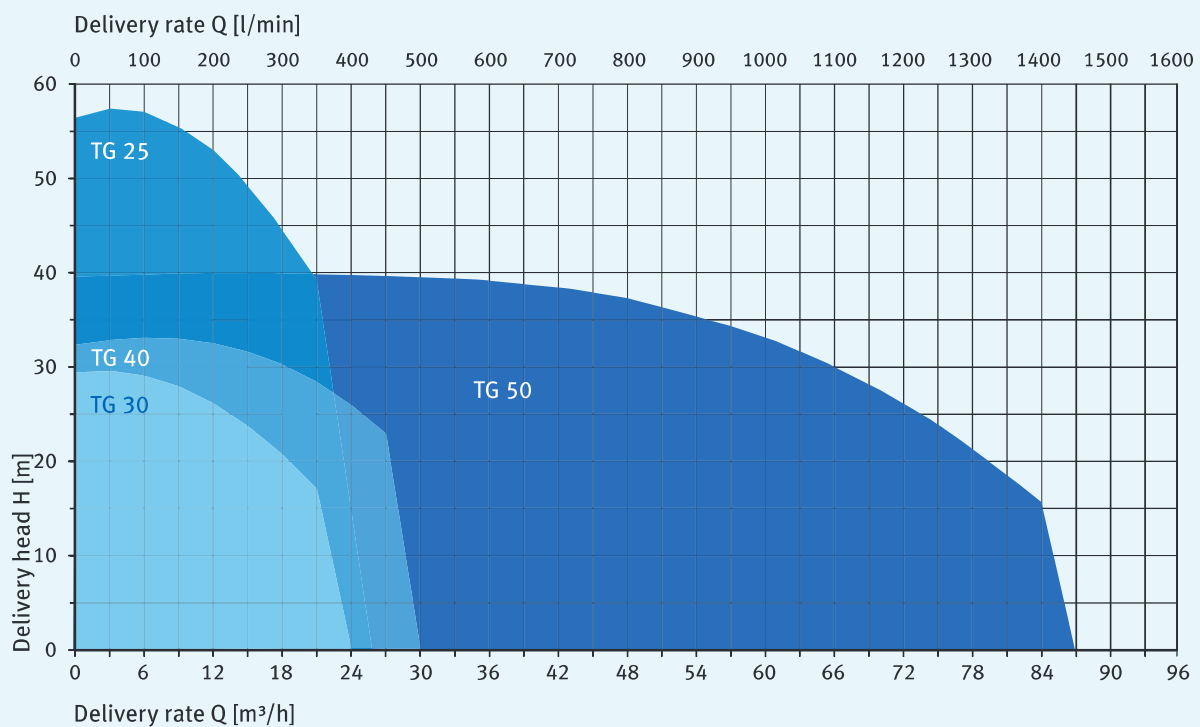
Maximum performance data

Type	Air portion Vol.- %	Delivery rate [l/min]	Delivery head [m]	Particle size [mm]	Chip length [mm]
TG 25	10	200	59	2	4
TG 30	10	350	28	1	3
TG 40	10	400	32	3	6
TG 50	10	1000	40	6	25

Fluid level

Type	Minimum distance [mm]	Minimum fluid level [mm]	Fluid level [mm]
TG 25	40	80	40
TG 30	60	60	40
TG 40	60	60	40
TG 50	65	105	40

Characteristic curve



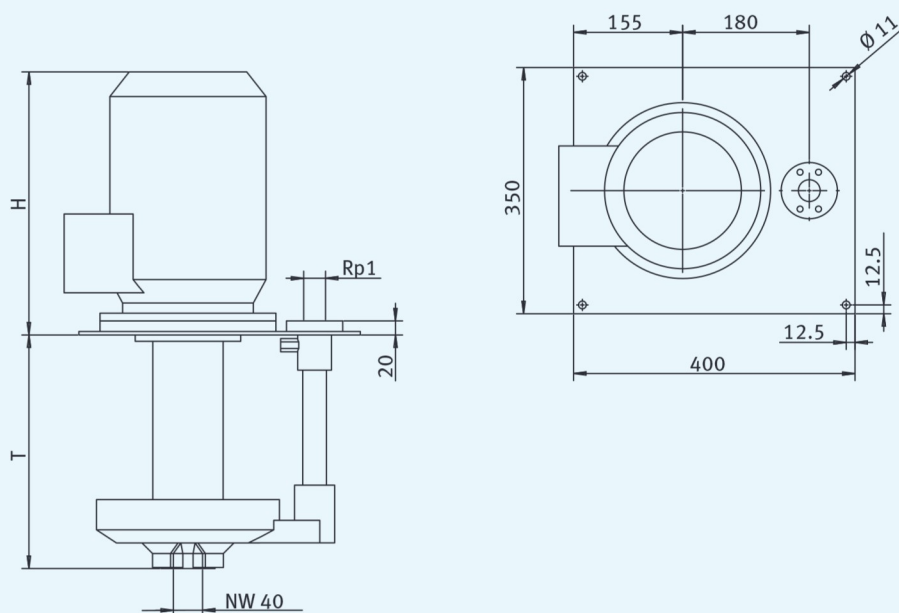
Clean coolant pump TG 25



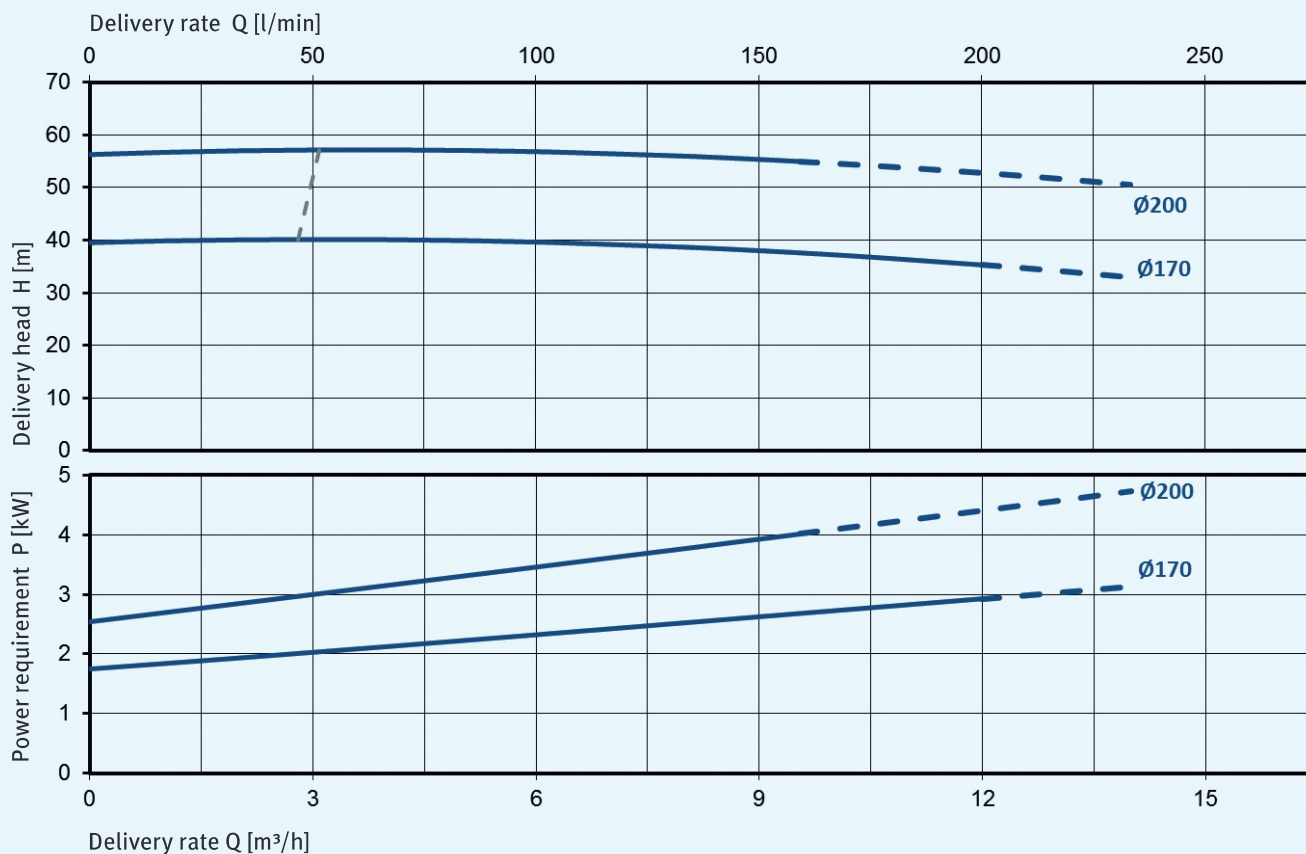
Variants

Type	T [mm]	H [mm]	Weight [kg]	Frequency [Hz]	Motor power (Nema Premium) [kW]	Noise level [dB(A)]
TG 25-70/30 332	332	391	57	50	3.0	67
TG 25-00/40 332	332	374	57	50	4.0	69
TG 25-70/30 580	580	391	74	50	3.0	67
TG 25-00/40 580	580	374	74	50	4.0	69
TG 25-45/30 332	332	391	57	60	3.45 (3.0)	71
TG 25-60/40 332	332	374	57	60	4.55 (3.7)	73
TG 25-45/30 580	580	391	74	60	3.45 (3.0)	71
TG 25-60/40 580	580	374	74	60	4.55 (3.7)	73

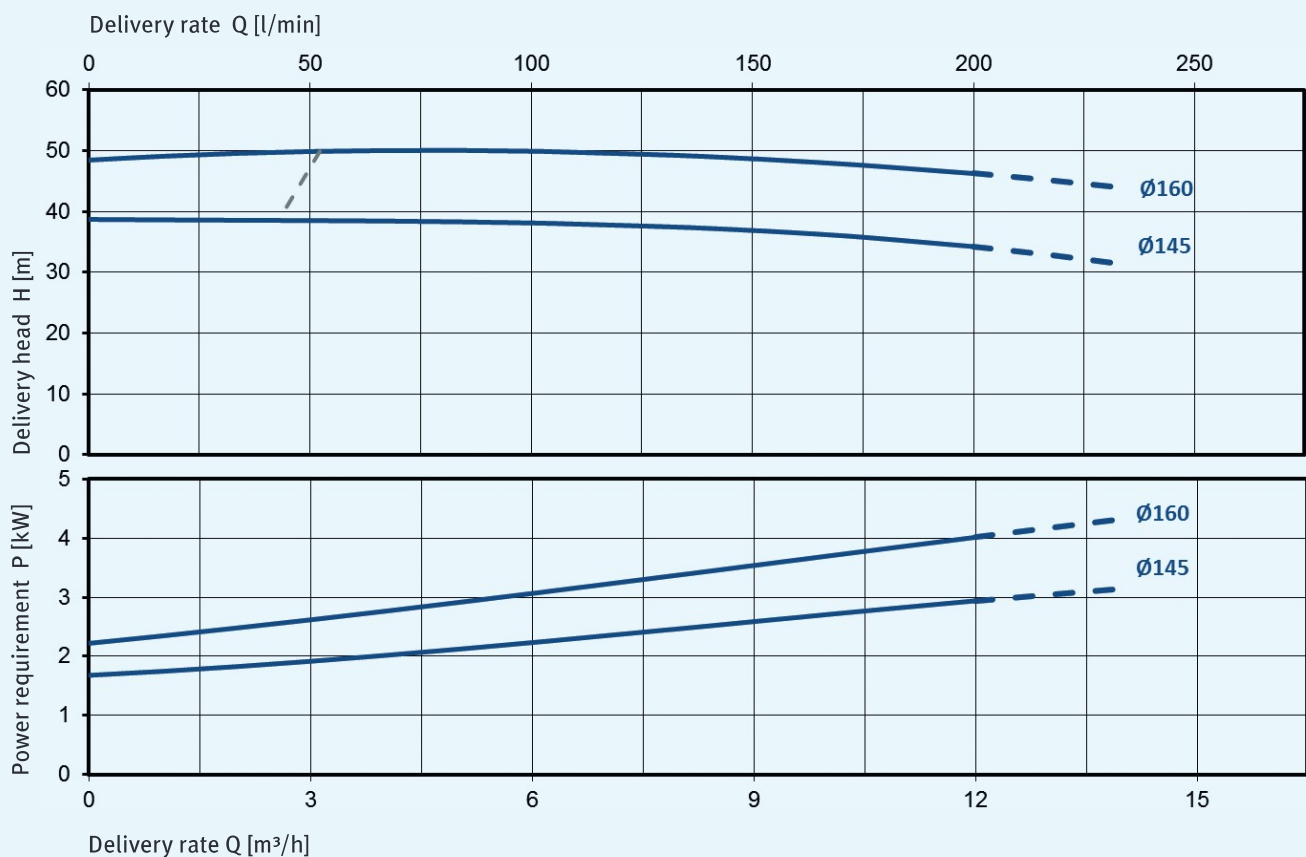
Dimensions



Characteristic curves for 2,900 min⁻¹, 50 Hz, 1 mm²/s



Characteristic curves for 3,500 min⁻¹, 60 Hz, 1 mm²/s



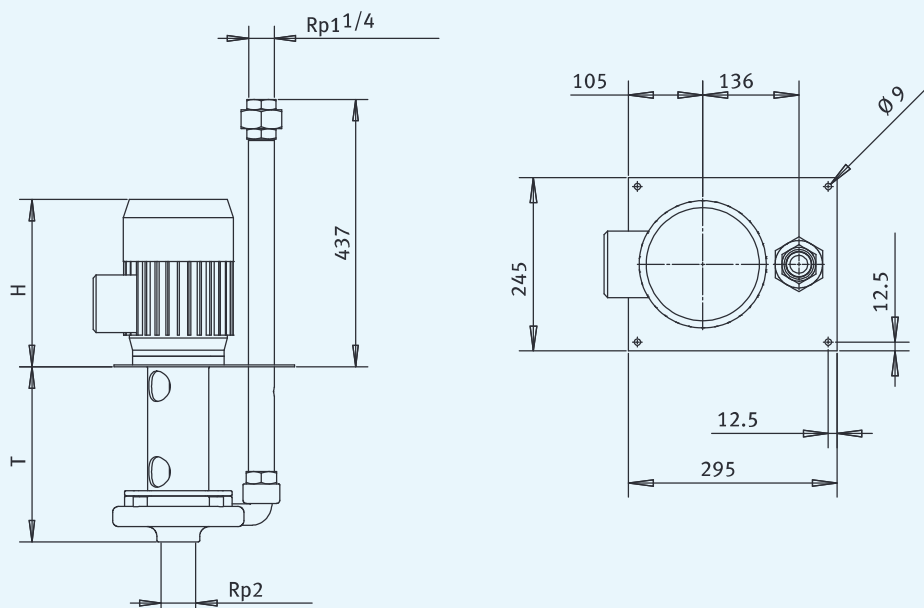
Clean coolant pump TG 30



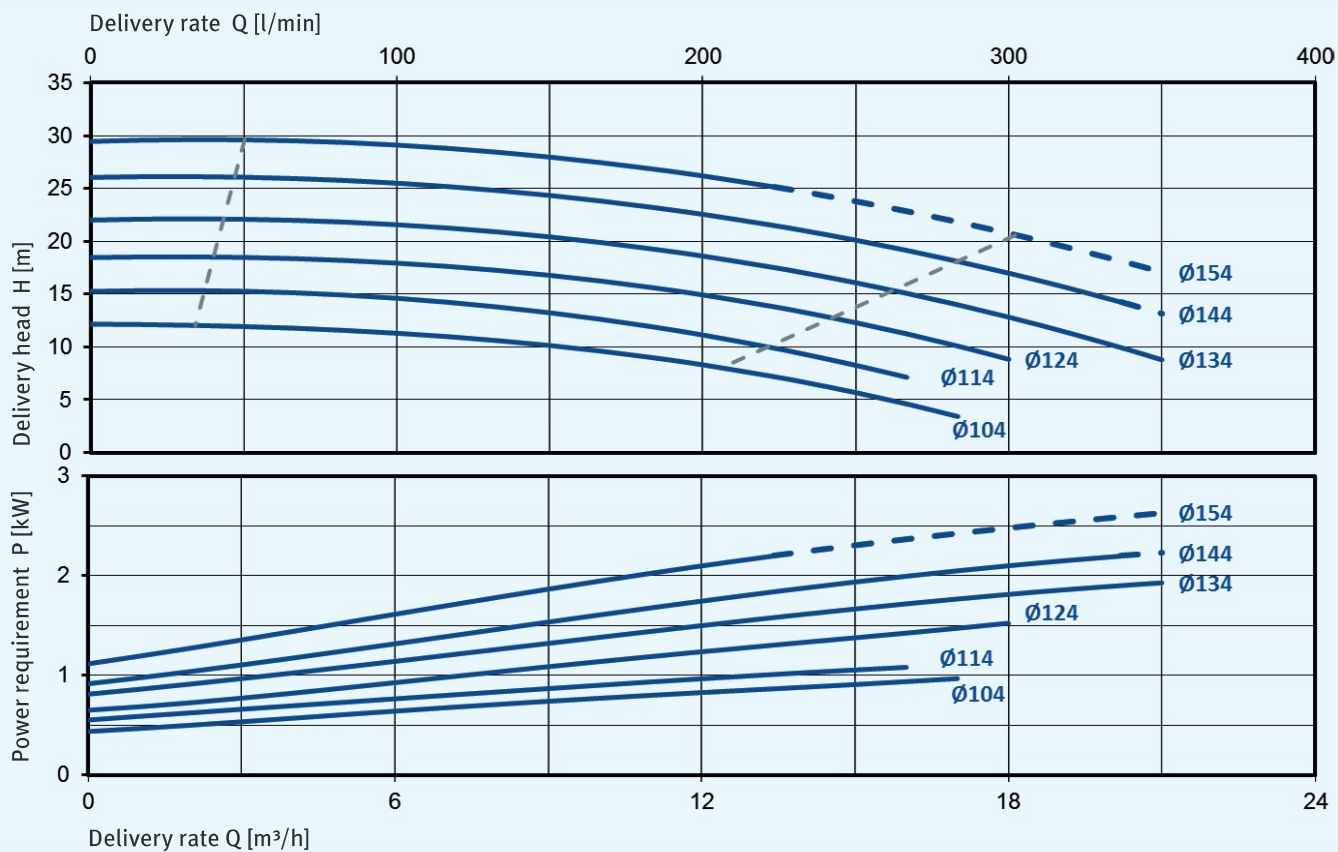
Variants

Type	T [mm]	H [mm]	Weight [kg]	Frequency [Hz]	Motor power [kW]	Noise level [dB(A)]
TG 30-../07 285	285	250	23	50	0.75	60
TG 30-../11 285	285	250	24	50 / 60	1.10	60 / 63
TG 30-../15 285	285	285	27	50 / 60	1.50	62 / 65
TG 30-../22 285	285	285	30	50 / 60	2.20	62 / 65
TG 30-../07 533	533	250	30	50	0.75	60
TG 30-../11 533	533	250	31	50 / 60	1.10	60 / 63
TG 30-../15 533	533	285	34	50 / 60	1.50	62 / 65
TG 30-../22 533	533	285	37	50 / 60	2.20	62 / 65
TG 30-../15 781	781	285	41	50 / 60	1.50	62 / 65
TG 30-../22 781	781	285	44	50 / 60	2.20	62 / 65

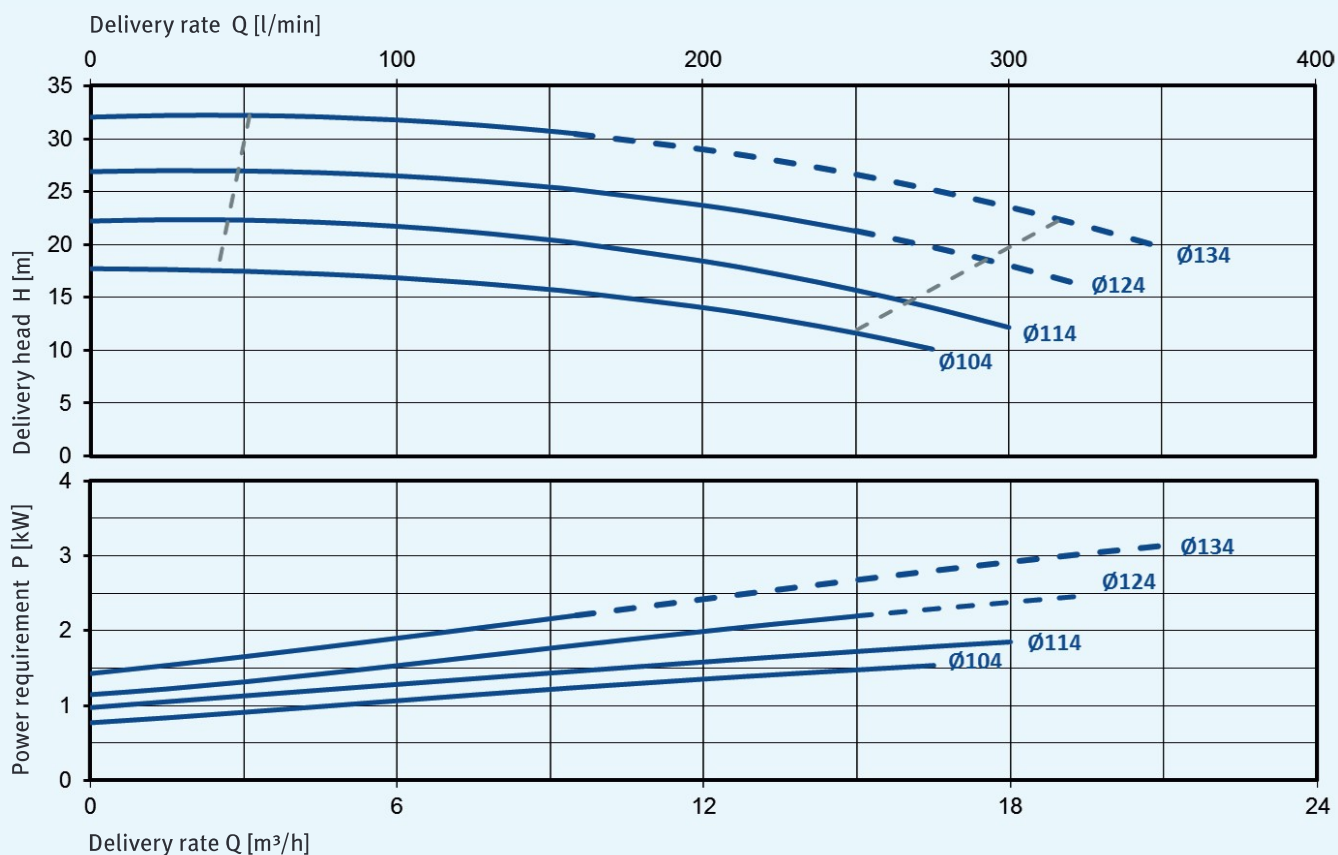
Dimensions



Characteristic curves for 2,900 min⁻¹, 50 Hz, 1 mm²/s



Characteristic curves for 3,500 min⁻¹, 60 Hz, 1 mm²/s



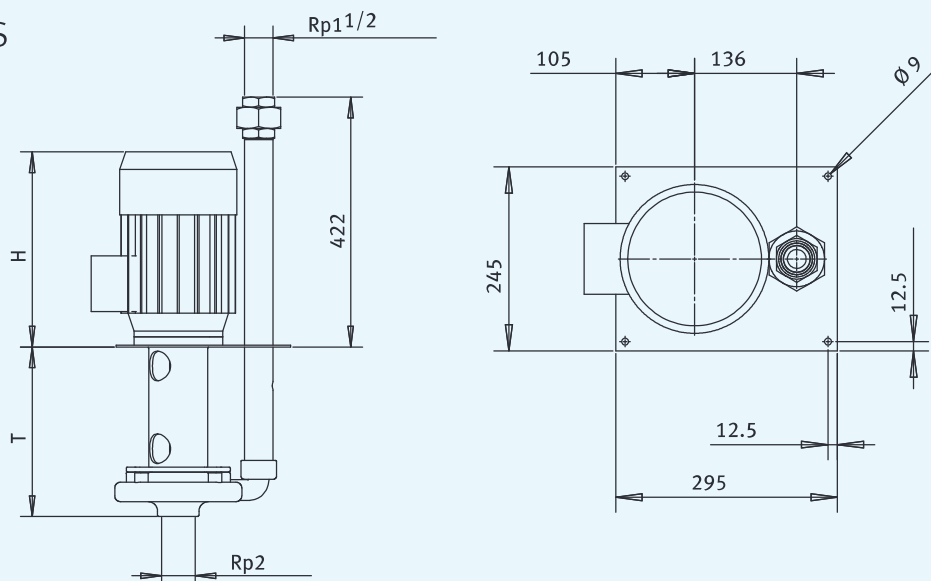
Clean coolant pump TG 40



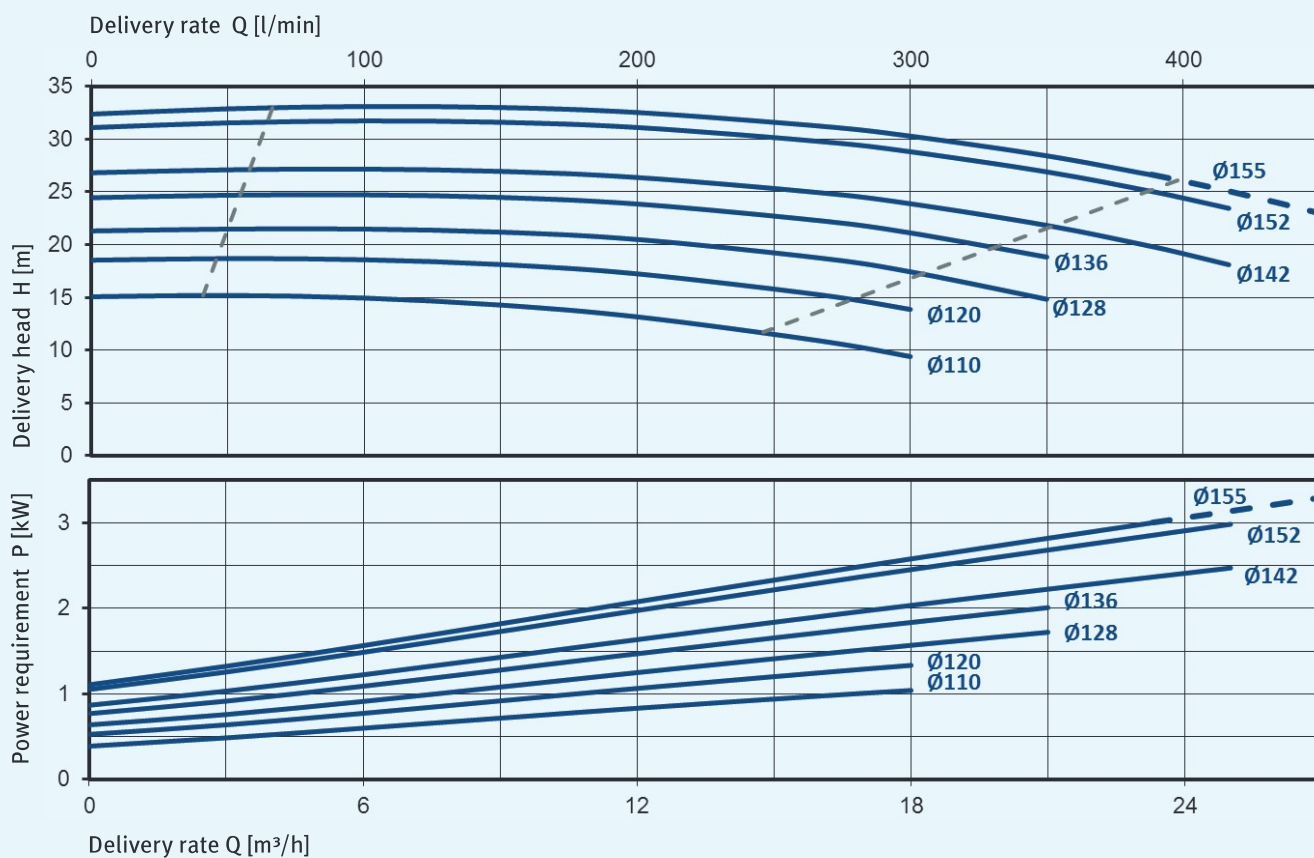
Variants

Type	T [mm]	H [mm]	Weight [kg]	Frequency [Hz]	Motor power [kW]	Noise level [dB(A)]
TG 40-../11 285	285	250	25	50	1.1	60
TG 40-../15 285	285	285	28	50 / 60	1.5	62 / 65
TG 40-../22 285	285	285	31	50 / 60	2.2	62 / 65
TG 40-../30 285	285	325	35	50 / 60	3.0	66 / 69
TG 40-../11 533	533	250	32	50	1.1	60
TG 40-../15 533	533	285	35	50 / 60	1.5	62 / 65
TG 40-../22 533	533	285	38	50 / 60	2.2	62 / 65
TG 40-../30 533	533	325	42	50 / 60	3.0	66 / 69
TG 40-../15 781	781	285	42	50 / 60	1.5	62 / 65
TG 40-../22 781	781	285	45	50 / 60	2.2	66 / 69
TG 40-../30 781	781	325	49	50 / 60	3.0	66 / 69

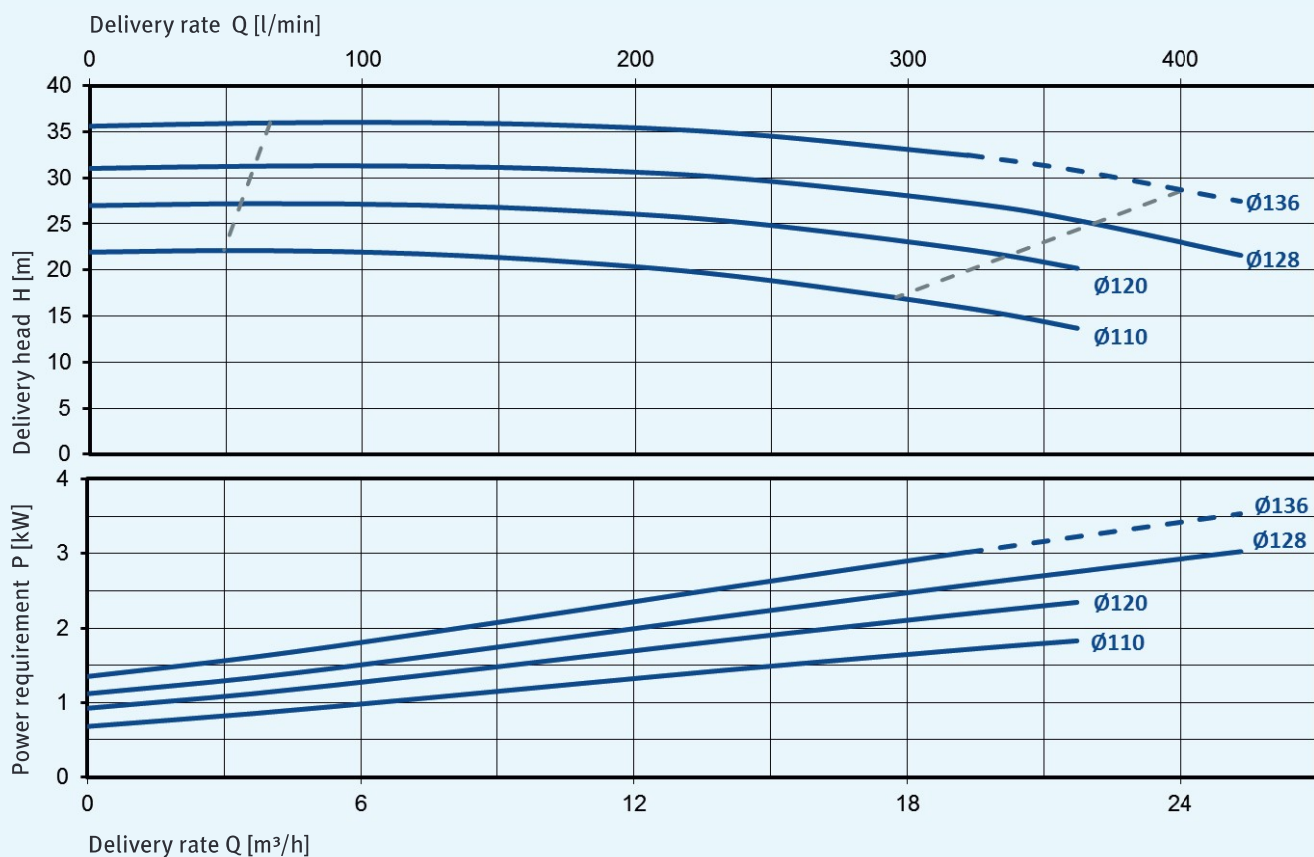
Dimensions



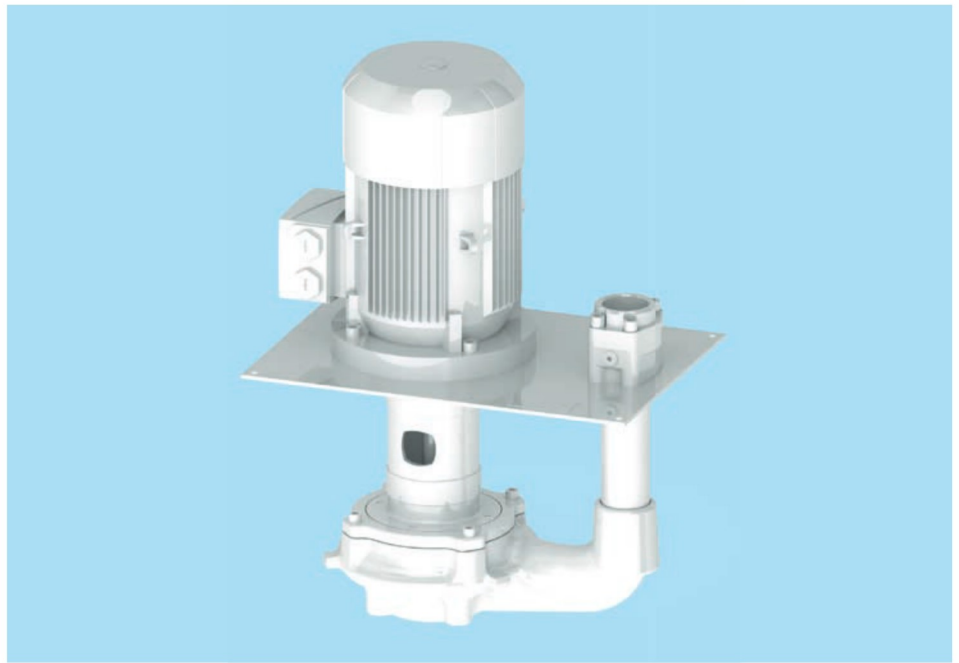
Characteristic curves for 2,900 min⁻¹, 50 Hz, 1 mm²/s



Characteristic curves for 3,500 min⁻¹, 60 Hz, 1 mm²/s



Clean coolant pump TG 50

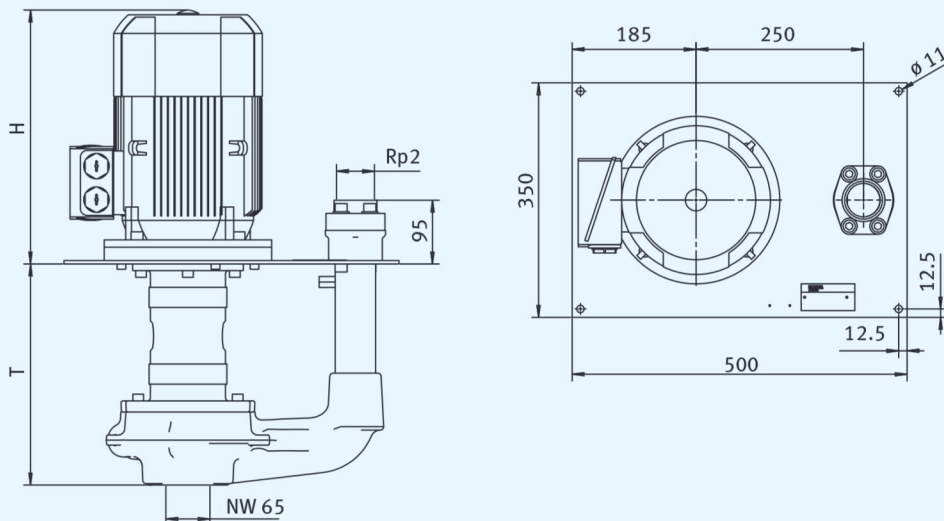


Variants

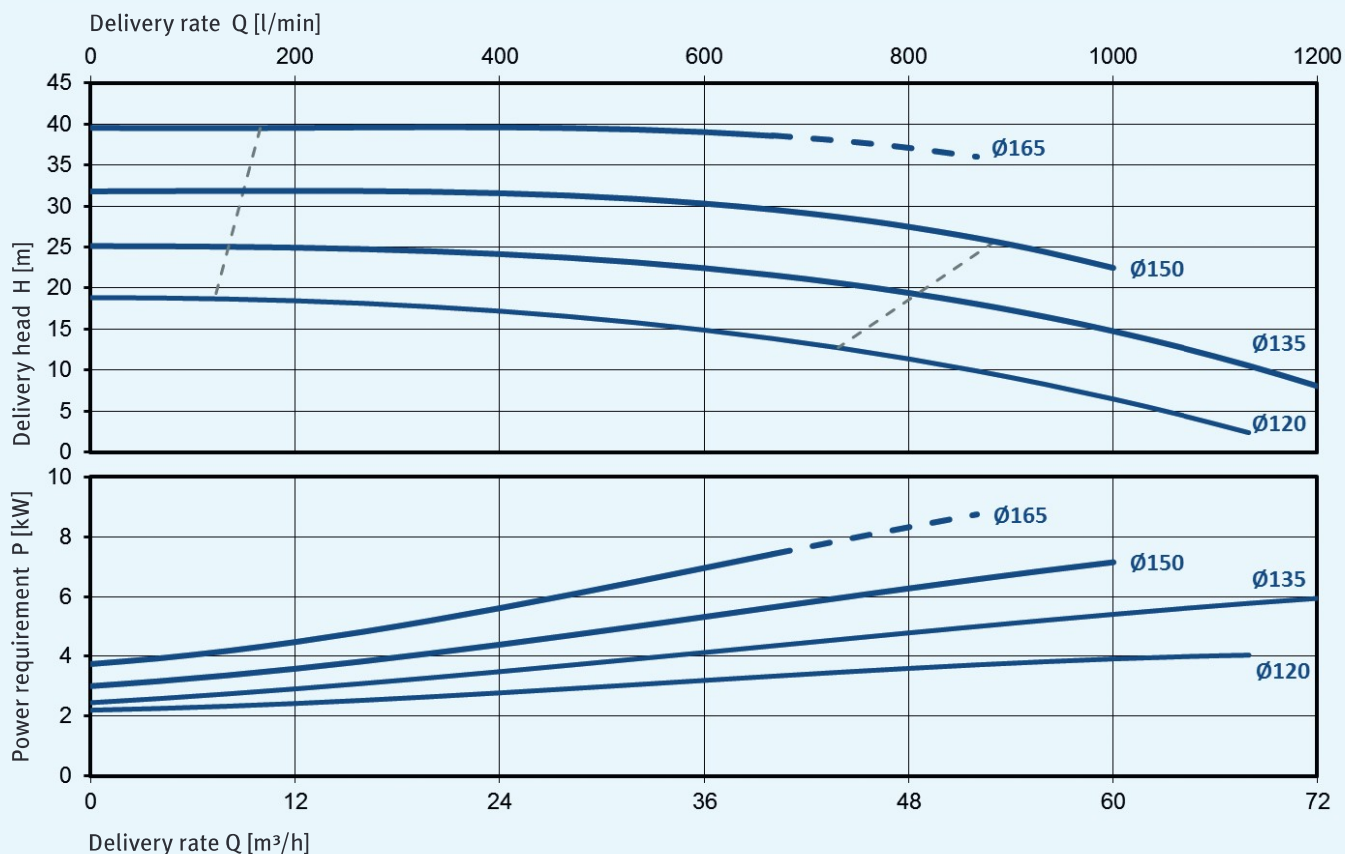
Type	T* [mm]	H [mm]	Weight [kg]	Frequency [Hz]	Motor power (Nema Premium) [kW]	Noise level [dB(A)]
TG 50-20/40 440	440	379	82	50	4.0	69
TG 50-20/40 880	880	379	98	50	4.0	69
TG 50-35/55 440	440	410	96	50	5.5	68
TG 50-35/55 880	880	410	114	50	5.5	68
TG 50-50/75 440	440	460	111	50	7.5	68
TG 50-50/75 880	880	460	129	50	7.5	68
TG 50-65/75 440	440	460	111	50	7.5	68
TG 50-65/75 880	880 <td 460	130	50	7.5	68	
TG 50-20/55 440	440	410	95	60	6.3 (5.5)	72
TG 50-20/55 880	880	410	114	60	6.3 (5.5)	72
TG 50-35/75 440	440	460	110	60	8.6 (7.5)	72
TG 50-35/75 880	880	460	128	60	8.6 (7.5)	72

* The following immersion depths are possible on request: 330 mm, 550 mm, 660 mm and 770 mm

Dimensions



Characteristic curves for 2,900 min⁻¹, 50 Hz, 1 mm²/s



Characteristic curves for 3,500 min⁻¹, 60 Hz, 1 mm²/s

