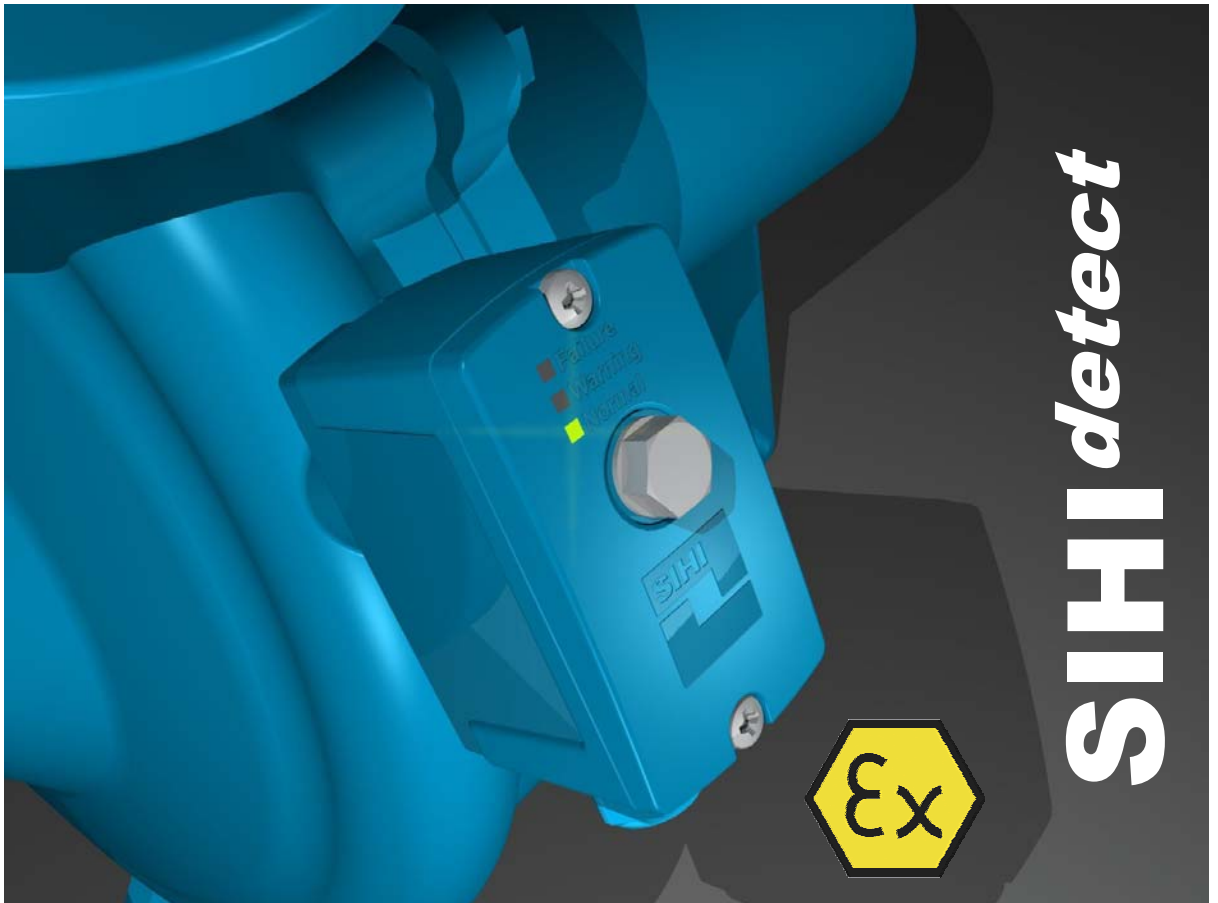
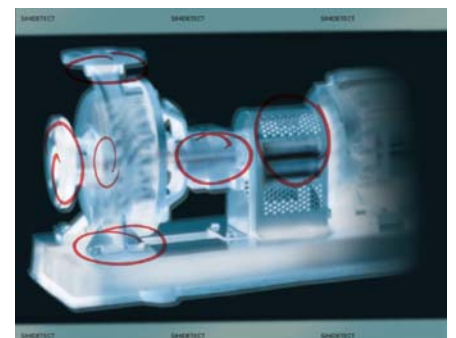


Condition-based maintenance becomes reality




The **SIHI***detect* sensor is the ideal solution for **vibration velocity** measurement and pump **condition monitoring**, for example to detect bearing wear, unbalance, misalignment, unacceptable pipeline forces, cavitation, and exceeding max flow rate, etc.

- **Simple to connect**
- **Universal use**
- **Visual check via LED display**
- **Easy Installation**
- **Available as non-Ex and Ex versions**




Properties

- Output of vibration velocity (RMS 10Hz–1kHz; 0 – 20 mm/s) according DIN/ISO 10816, 5199, 9905
- Condition monitoring up to 5.6 kHz (normal / unacceptable operating mode)
- 4 ... 20 mA interface
- Installation up to 160 °C surface temperature by use of cooling elements
- LED display green, yellow and red
- Digital communication through FSK* modem (HART® compatible) for additional information and the use of the **SIHI^{vibrosoft}** Software**
- EDD for Siemens SIMATIC PDM and Emerson AMS**
- DTM driver for FDT frame applications (PACTware, FieldCare, SMART VISION, etc.)**
- Integrated error memory
- Simple mounting on the pump
- Requires no experience of vibration analysis technology
-  suitable for installation in hazardous areas (up to zone 1)

* FSK Frequency Shift Keying

** Optional extra

Technical data

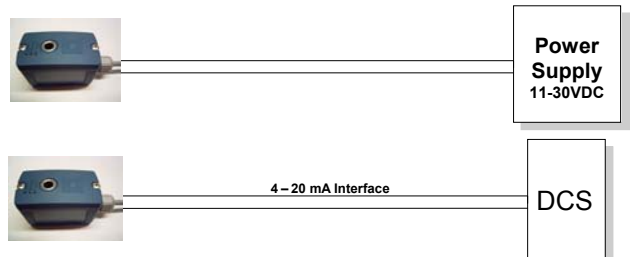
Construction:	Polyamide PA6, fibre-glass reinforced protection class IP66 (EN 60529)
Connection:	2 x 2.5 mm ² terminal block
Dimension:	79 mm x 42 mm x 53 mm
Ambient temperature:	- 40 °C to + 80 °C
Power loop:	4 ... 20 mA; 11 ... 30 VDC
Ex protection type (optional):	 II 2G Ex ia IIC T4 – TÜV 07 ATEX 553845

Simple installation

- Simple installation at the bearing bracket or volute casing. Sensor can also be bonded using a glue adapter.



- Electrical connection

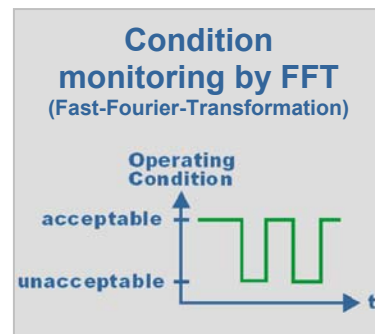
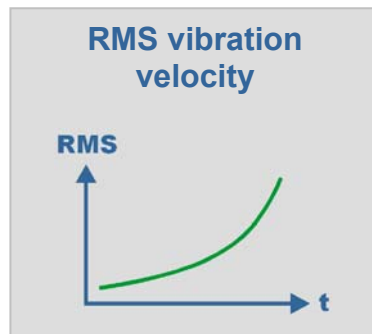


- Simple calibration by pushing a button



Functions

Principle:



Detection:

- unbalance
- misalignment
- detrimental pipe-work forces
- etc.

- unacceptable operation mode for example cavitation, bearing wear, exceeding of max flow rate, etc.

Calibration:

not required

required

Display:



SIHI^{detect} Standard Software Options

- Changing threshold values of allowable vibration velocity
- Calibration process
- Sensor ID and computer interface



Available as an optional extra, **SIHI *vibrosoft*** software has been developed purposely for professional analysis of the data, which has been generated by the **SIHI *detect*** sensor. Detailed evaluation of the data can subsequently be made in order to reveal very specific aspects of vibration.

Functions of the SIHI *vibrosoft* software

- **Condition monitoring**
 - visual mapping of vibration data
 - frequency-specific, and/or general, threshold magnitudes based on calibration data
 - data logging
- **Service**
 - extracting the error memory
 - sensor temperature
- **Data analysis**
 - evaluation of the logged data
 - trend analysis for wear
 - analysis of intermittent anomalies



Vibration services available throughout Europe

Sterling Fluid Systems (Austria)

Wien

Tel.: +43 (0) 1 680 050

Fax: +43 (0) 1 680 0521

Email: sales_austria@sterlingsihi.de

Sterling Fluid Systems (Belgium)

Groot-Bijgaarden

Tel.: +32 (0) 2 481 7711

Fax: +32 (0) 2 481 7737

Email: sales_be@sterlingfluid.com

Sterling SIHI (Bulgaria)

Sofia-Ilinden

Tel.: +359 (0) 2 8228311

Fax: +359 (0) 2 9201113

Email: office@sterlingsihi.bg

Sterling Fluid Systems (Czech Rep.)

Olomouc

Tel.: +420 587 433 651

Fax: +420 587 433 653

Email: sterling@sterling.cz

Sterling Fluid Systems (France)

Trappes

Tel.: +33 (0) 1 34 823 900

Fax: +33 (0) 1 34 823 961

Email: sales.france@sterlingfluid.com

Sterling SIHI (Germany)

Itzehoe

Tel.: +49 (0) 4821 771 01

Fax: +49 (0) 4821 771 274

Email: sales@sterlingsihi.de

Sterling Fluid Systems (Hungary)

Veszprem

Tel.: +36 (0) 88 406 633

Fax: +36 (0) 88 406 635

Email: info@sterlingsihi.hu

Sterling Fluid Systems (Italy)

Monza, Milan

Tel.: +39 039 282 41

Fax: +39 039 282 4220

Email: sterlingitaly@sidro.it

Sterling Fluid Systems

(Netherlands)

Beverwijk

Tel.: +31 (0) 251 263 232

Fax: +31 (0) 251 226 309

Email: info@sihi.nl

Sterling Fluid Systems (Poland)

Warszawa

Tel.: +48 (0) 22 335 2480/81

Fax: +48 (0) 22 335 2482

Email: sterling@sterling.pl

Sterling Fluid Systems (Romania)

Bucuresti

Tel.: +40 (0) 21 610 7188

Fax: +40 (0) 21 210 8287

Email: office@sterlingsihi.ro

Sterling Fluid Systems (Spain)

Madrid

Tel.: +34 91 709 1310

Fax: +34 91 715 9700

Email: sihi@sihi.es

Sterling Fluid Systems (Schweiz)

Schaffhausen

Tel.: +41 (0) 52 644 0606

Fax: +41 (0) 52 644 0616

Email: info@sterling.ch

Sterling Fluid Systems (UK)

Altrincham/Cheshire

Tel.: +44 (0)161 928 6371

Fax: +44 (0)161 925 2129

Email: uksales@sterlingfluid.com

For further address details
please visit
www.sterlingsihi.com

