

Fullflow 502



Specifications and types

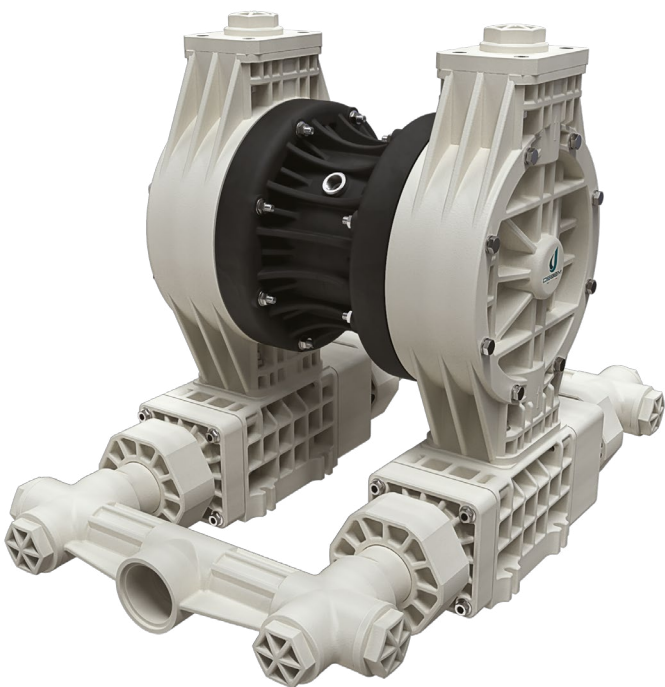


Zone 2 – Zone 22	II 3G Ex h IIB T4 Gc e II 3D Ex h IIIB T135°C Dc X
Zone 1 – Zone 21	II 2G Ex h IIB T4 Gb e II 2D Ex h IIIB T135°C Db X
Zone 1 – Zone 21	II 2G Ex h IIC T4 Gb **
IECEX	Ex h IIB T4 Gb e Ex h IIIB T135°C Db

** The Group IIC gas application string is applicable on Boxer series pumps in Conduct version with Conductive TFM diaphragms.

Suction / delivery connections	2"1/2 f (BSPP) o DN 65
Air fitting	1/2" f BSPP
Max. flow rate*	530 l/min
Max. supply air pressure	4 bar
Max. head*	40 m
Max negative suction head - dry-running	3,5 m
Max. diameter suspended solids	45 mm
Max length of solids	600 mm

*The curves and the performances refer to pumps with immersed suction and open delivery outlet, with water at 20°C and vary depending on material composition.



PLASTIC MATERIAL - PP (GF/CF)

Fullflow 502



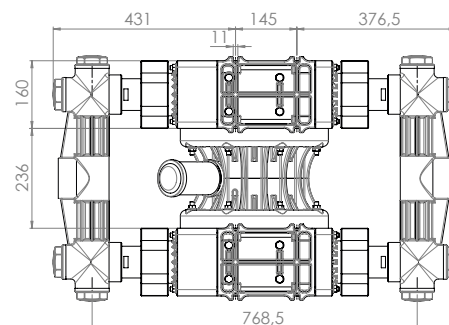
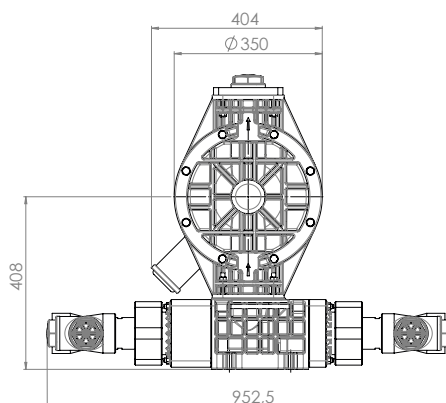
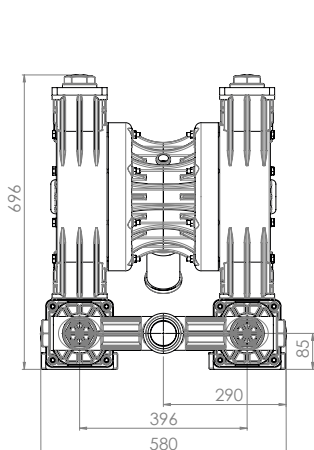
Maximum dimensions

Height	696 mm
Width	580 mm
Depth	952 mm



Construction mat. (casing and manifolds) and net weight

POLYPROPYLENE (with glass additive)	55 Kg
	Temp. 3°C min.
	65°C max



Fullflow 502



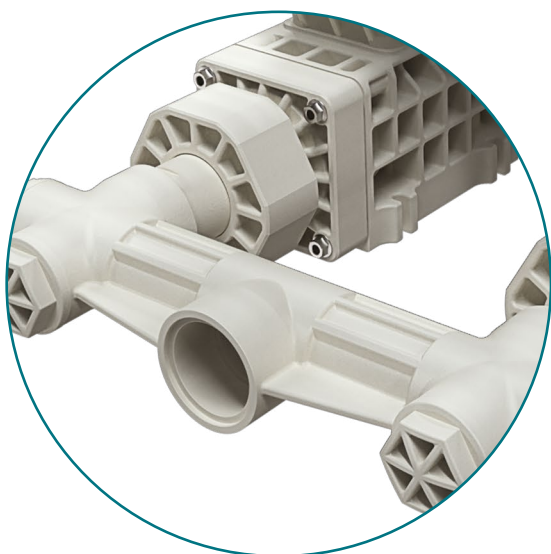
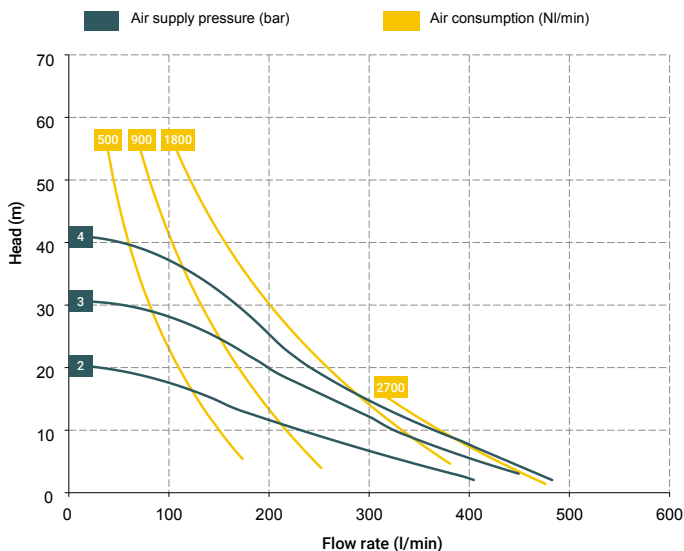
Specifications and types



Zone 2 – Zone 22
 Zone 1 – Zone 21
 Zone 1 – Zone 21
 IECEx

II 3G Ex h IIB T4 Gc e II 3D Ex h IIIB T135°C Dc X
 II 2G Ex h IIB T4 Gb e II 2D Ex h IIIB T135°C Db X
 II 2G Ex h IIC T4 Gb **
 Ex h IIB T4 Gb e Ex h IIIB T135°C Db

** The Group IIC gas application string is applicable on Boxer series pumps in Conduct version with Conductive TFM diaphragms.



Distributor material T40 (compressed air circuit)

- POM

Core material

- Polypropylene (with glass filler)

Diaphragm materials

- NBR
- EPDM

Cap materials

- Polypropylene (with glass filler)

O-ring materials

- EPDM
- NBR

Clapet materials

- EPDM
- Natural Rubber

Packaging

Wooden case - cm 113 x 73 x 91 - weight 55 Kg
 (the weight refers only to the packaging without the pump inside)

Accessories

- Air regulation kit W8000-20-G

The curves and performance of the pumps have been determined in accordance with the ANSI/HI 10.6/2016 standard and may vary depending on the composition materials.

Debem procedure

1. The suction manifold positioned with a positive head of 50 cm.
2. The maximum length of the suction pipe is 50 cm without bends, elbows, filters, or other accessories.
3. The diameter of the suction pipe must be the same diameter as the manifold or larger.
4. The discharge pipe, including the flow meter, must not exceed 1 meter and must be the same diameter as the manifold.
5. If testing with longer pipes is necessary, pipes of larger diameter must be used, otherwise the data may be distorted.

Any colour variations in our polypropylene and PVDF products are due to the special blends of the raw materials used. The use of high levels of glass and long-fiber carbon filler result in a unique colour that does not in any way affect the quality of the product; on the contrary, it points to the high level of content used to ensure outstanding performance.