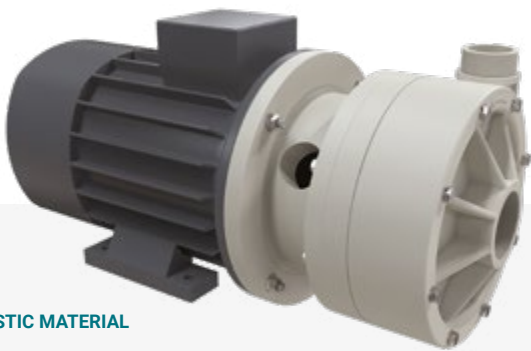


MB 160

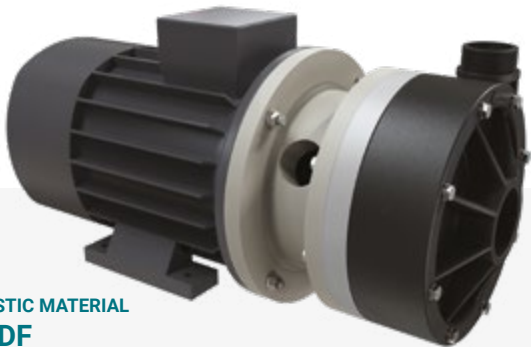
Specifications and types

Suction fittings	2"1/2 f BSPP or DN 65
Delivery fittings	2" m BSPP or DN 50
Max. flow rate	70 m3/h
Max. head	32 m
Viscosity up to	500 cps
Standard open impeller	Ø 162 mm H 11 mm -10 ° *
Solids passing	Ø max 9 mm

* Special versions are available on request for the fluid pumped



**PLASTIC MATERIAL
PP**



**PLASTIC MATERIAL
PVDF**



MATERIALS OF CONSTRUCTION PUMP CASING, OPERATING TEMPERATURES** AND NET WEIGHT

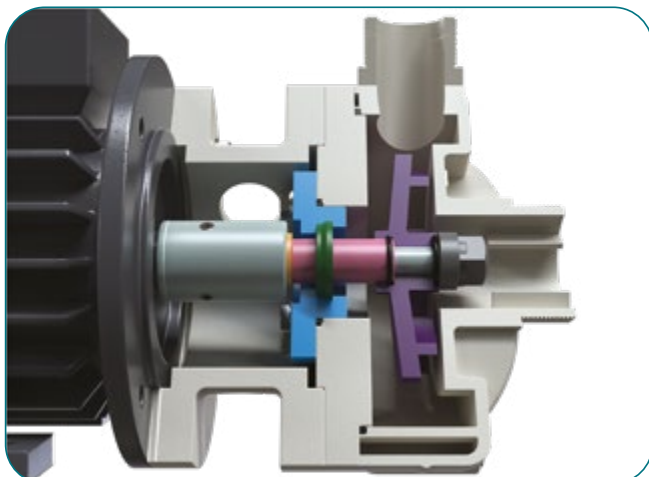
POLYPROPYLENE (with glass additive)	9.8 Kg*	Temp. 0°C min. +70°C max
PVDF (with carbon additive)	12.2 Kg*	Temp. -10°C min. +100°C max

* The weights refer to the pump without the motor
 **Measurements should be taken with agitated water; temperatures may vary depending on the conditions of the system and/or the processed liquid

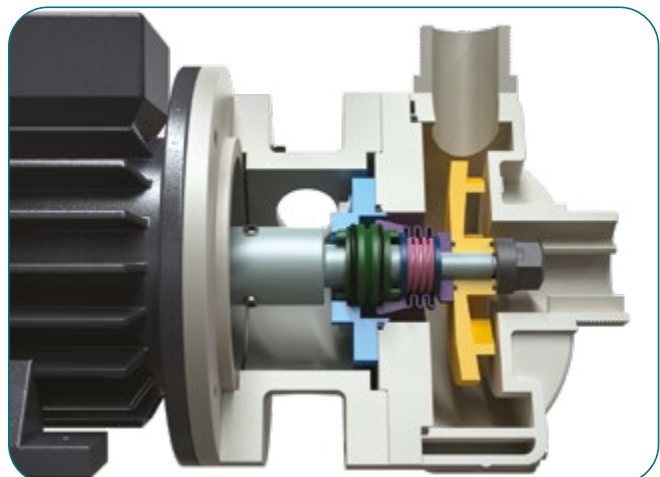
STANDARD ELECTRIC MOTOR:

Kw	7.5
HP	10
Constructive Form	B3 + B5
RPM	2900
Three-phase 400/690 V	-
50/60 Hz	-
2 poles	-
Efficiency class	IE3
Protection	IP55
Ambient temperature	-30°C + 45°C
Aluminium/Cast iron	-
ATEX	on request

TL = LIP SEAL



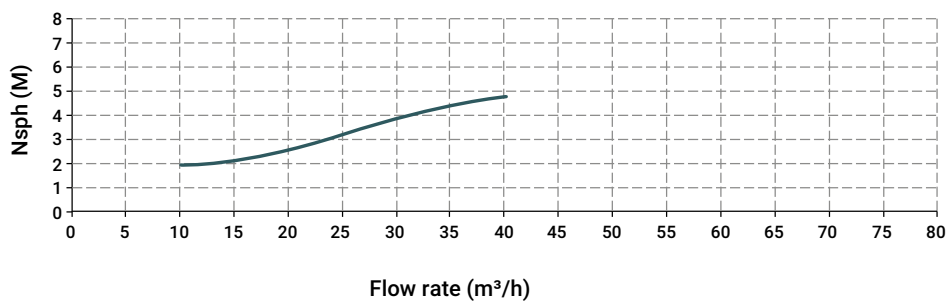
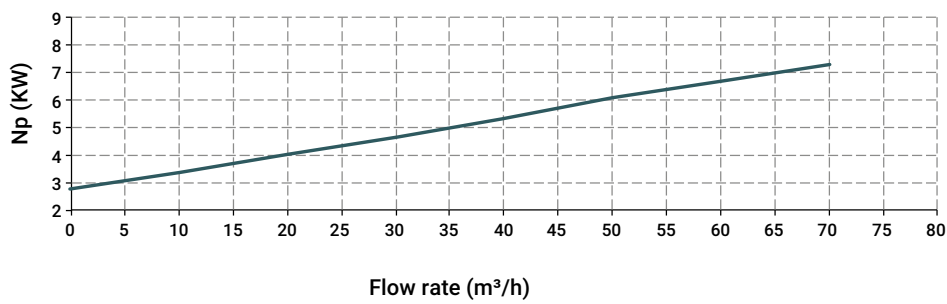
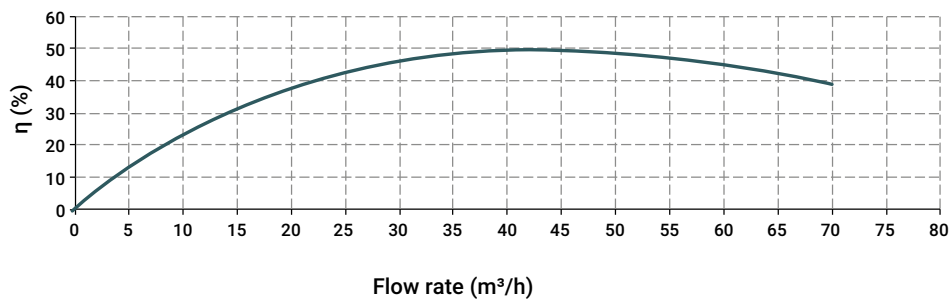
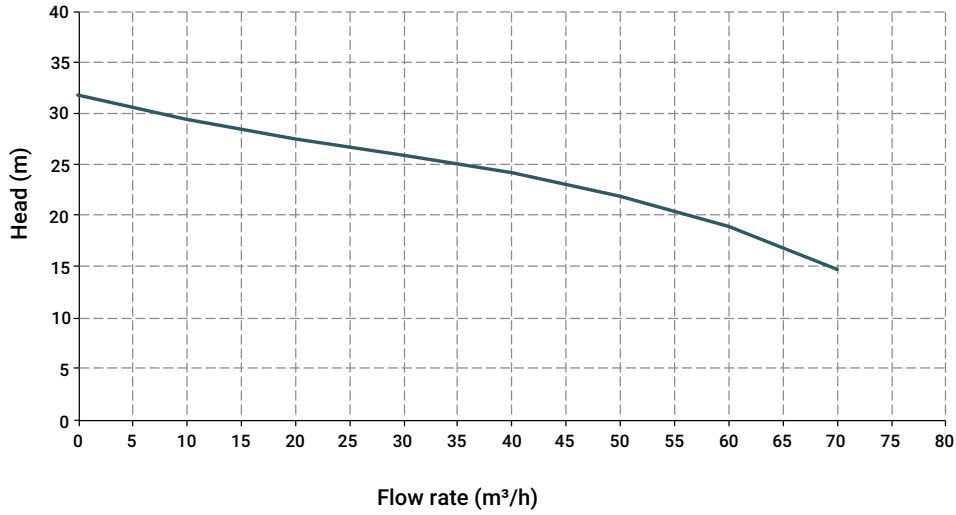
TS = TBELLOWS SEAL



MB 160



Specifications and types



The curves and performances refer to tested pumps, with water at 20 °C, two-pole motor 50 Hz (2900rpm)

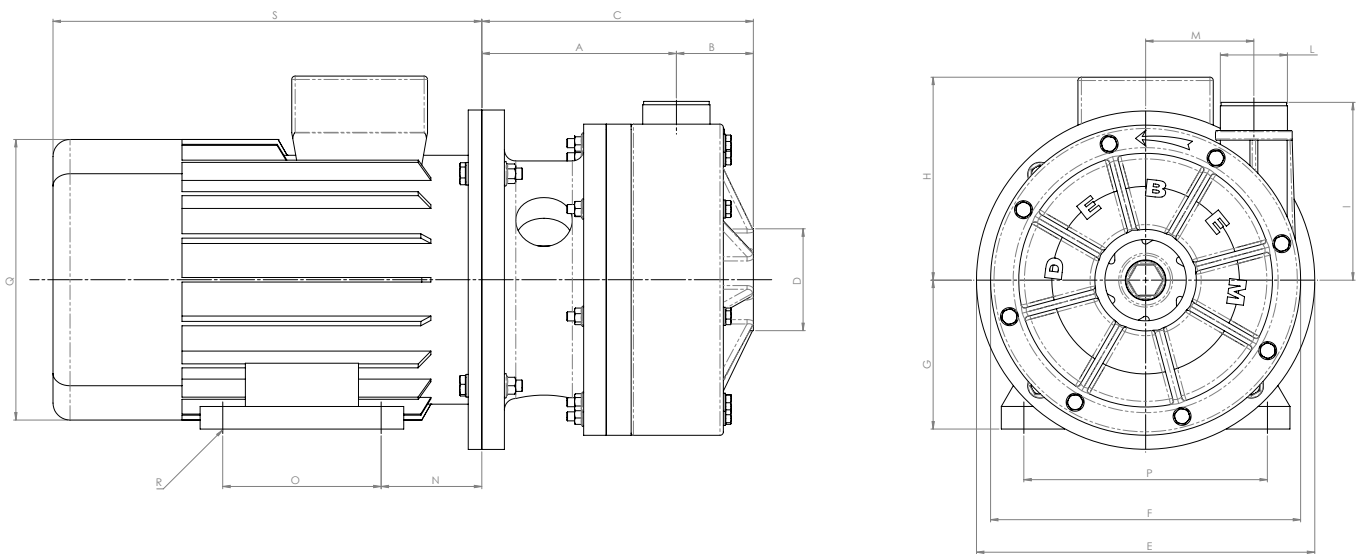
MB 160

Specifications and types

Length measurements in mm

MOD.	TEN.	POWER	Ø PASS. SOLIDS.	A	B	C	D	E	F	G	H	I	L	M	N	O	P	Q	R	S*
MB 160	TL - TS	7,5 KW - 10 HP	9	178	68	246	2"1/2f(**) o DN 65	300	275	132	190	158	2" m (**) o DN 50	96	89	178	216	256	12	425

* Measurements may vary depending on the motor supplier.



Sealing O-ring materials

- EPDM
- VITON®

Packaging

- Wooden case size cm 70 x 45 x 55 - Weight 16 Kg
(the weight refers only to the packaging without the pump inside)

Accessories

- FLANGE KIT (DIN standard - ANSI on request)
- Basket filter in Polypropylene or PVDF



UNDER HEAD USE