

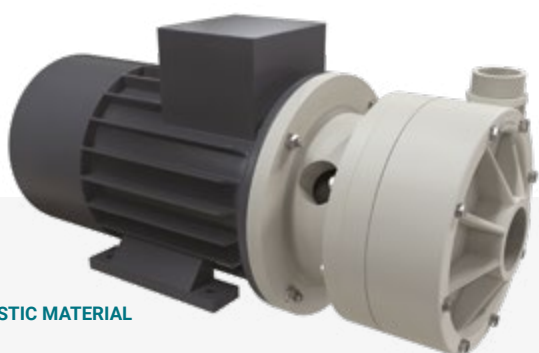
MB 180



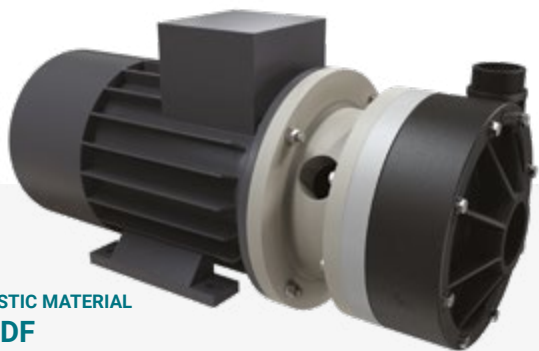
Specifications and types

| | |
|------------------------|------------------------|
| Suction fittings | 2"1/2 f BSPP or DN 65 |
| Delivery fittings | 2" m BSPP or DN 50 |
| Max. flow rate | 80 m3/h |
| Max. head | 43 m |
| Viscosity up to | 500 cps |
| Standard open impeller | 176 mm H 15 mm -10 ° * |
| Solids passing | Ø max 9 mm |

* Special versions are available on request for the fluid pumped



**PLASTIC MATERIAL
PP**



**PLASTIC MATERIAL
PVDF**



MATERIALS OF CONSTRUCTION PUMP CASING, OPERATING TEMPERATURES** AND NET WEIGHT

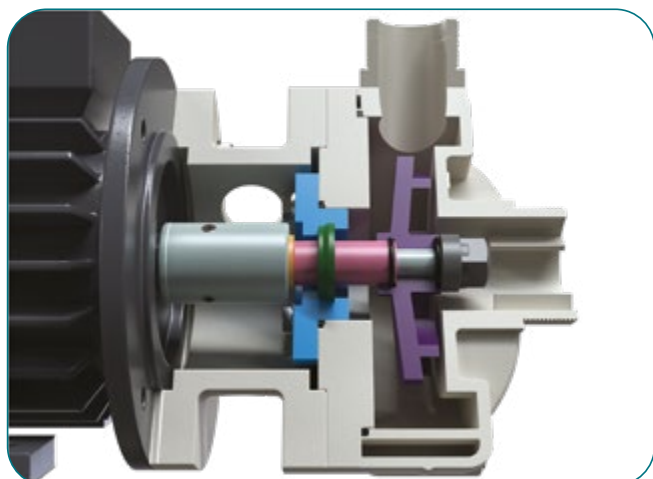
| | |
|--|--|
| POLYPROPYLENE (with glass additive) | 9.9 Kg* Temp. 0°C min. +70°C max |
| PVDF (with carbon additive) | 12.2 Kg* Temp. -10°C min. +100°C max |

* The weights refer to the pump without the motor
**Measurements should be taken with agitated water; temperatures may vary depending on the conditions of the system and/or the processed liquid

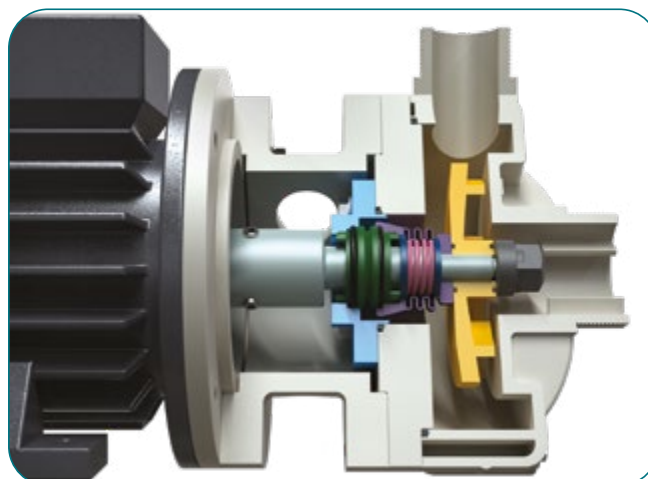
STANDARD ELECTRIC MOTOR:

| | |
|------------------------------|--------------|
| Kw | 11 |
| HP | 15 |
| Constructive Form | B3 + B5 |
| RPM | 2900 |
| Three-phase 400/690 V | - |
| 50/60 Hz | - |
| 2 poles | - |
| Efficiency class | IE3 |
| Protection | IP55 |
| Ambient temperature | -30°C + 45°C |
| Aluminium/Cast iron | - |
| ATEX | on request |

TL = LIP SEAL

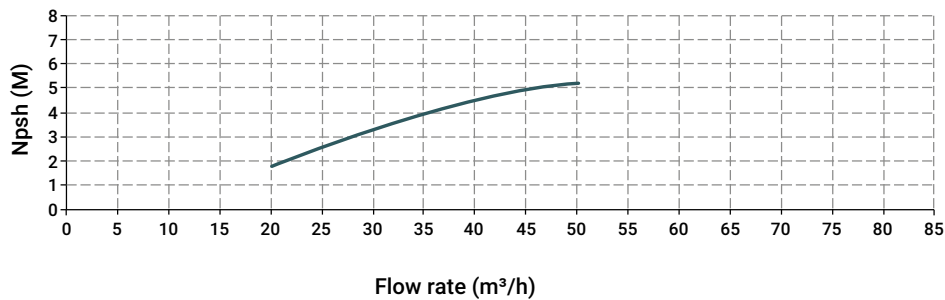
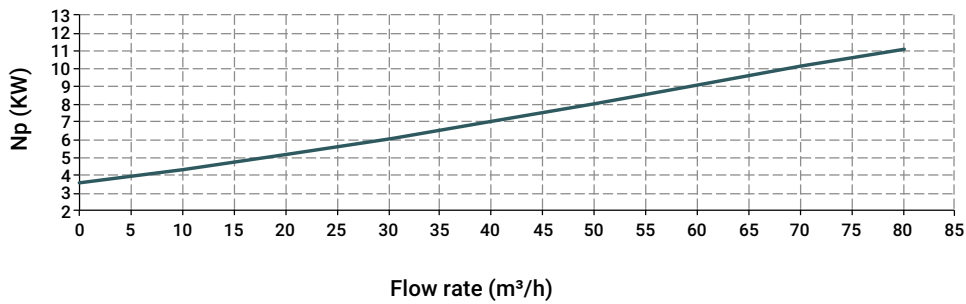
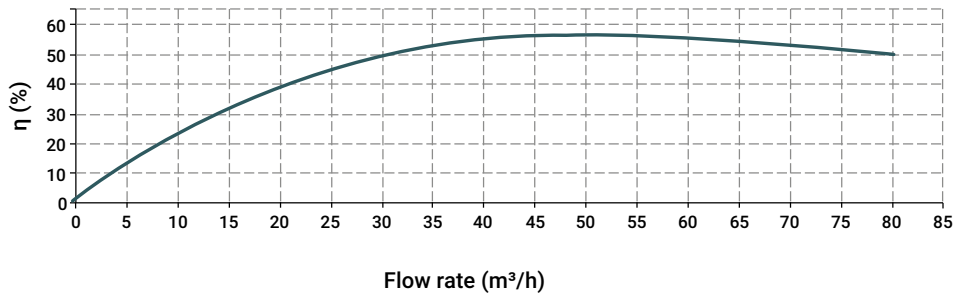
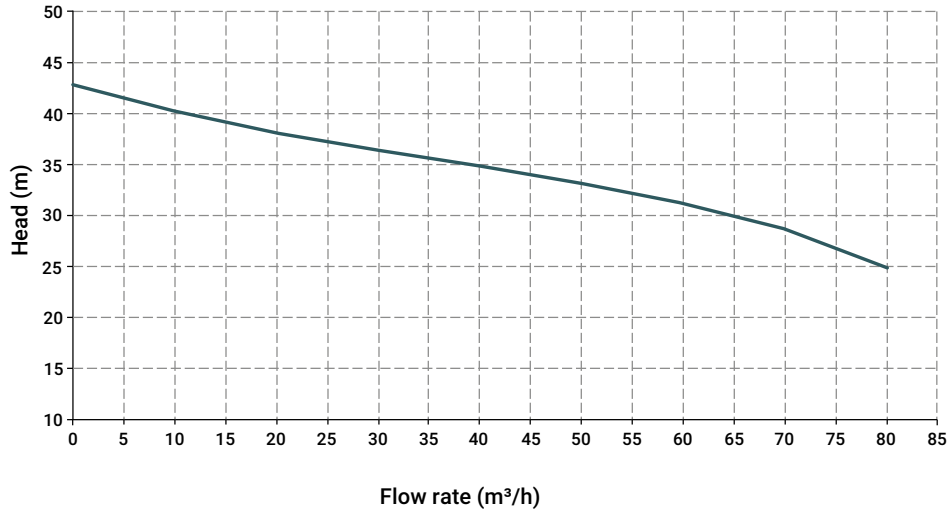


TS = TBELLOWS SEAL



MB 180

Specifications and types



The curves and performances refer to tested pumps, with water at 20 °C, two-pole motor 50 Hz (2900rpm)

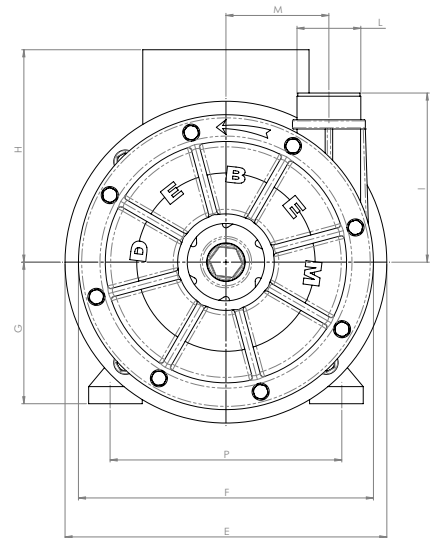
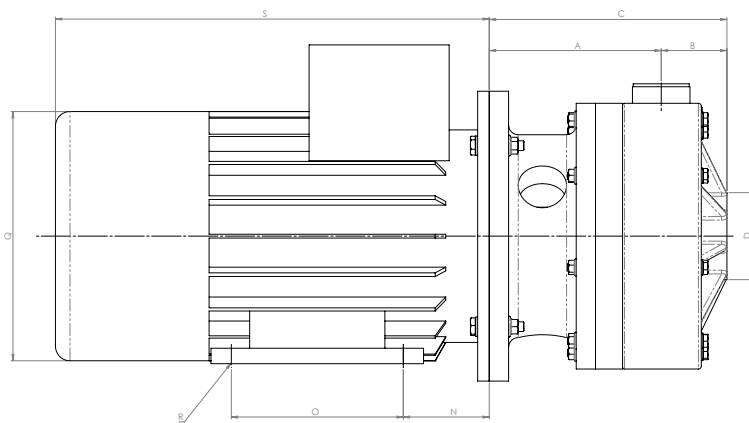
MB 180

Specifications and types

Length measurements in mm

| MOD. | TEN. | POWER | Ø PASS. SOLIDS. | A | B | C | D | E | F | G | H | I | L | M | N | O | P | Q | R | S* |
|--------|---------|---------------|-----------------|-----|----|-----|--------------------|-----|-----|-----|-----|-----|-------------------|----|-----|-----|-----|-----|----|-----|
| MB 180 | TL - TS | 11 KW - 15 HP | 9 | 178 | 68 | 246 | 2"1/2f(**) o DN 65 | 350 | 275 | 160 | 231 | 158 | 2" m (**) o DN 50 | 96 | 108 | 210 | 254 | 311 | 12 | 503 |

* Measurements may vary depending on the motor supplier.



Sealing O-ring materials

- EPDM
- VITON®

Imballo

- Wooden case si cm 81 x 40 x 56 - Weight 17 Kg
(the weight refers only to the packaging without the pump inside)

Accessories

- FLANGE KIT (DIN standard - ANSI on request)
- Basket filter in Polypropylene or PVDF



UNDER HEAD USE