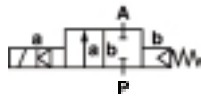


Buschjost 82400 / 82410 Series

Indirect solenoid actuated diaphragm valves

8 to 50 mm orifice (ND)

2/2, NC, G¼ to G2 / ¼ NPT to 2 NPT



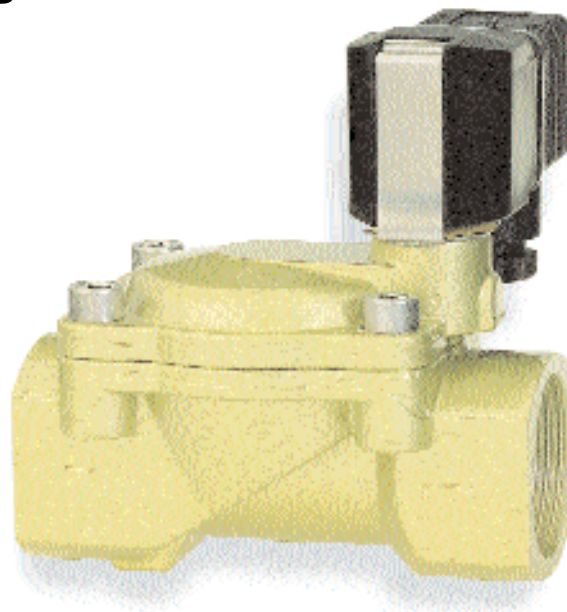
High flow rate

Damped operation

Clear compact design

Solenoid interchangeable without tools (Click-on®)

Particularly suitable for use as water valve in accordance with DIN EN 60730-2-8



Technical data

Medium:

Neutral gases and liquid fluids

Viscosity:

25 mm²/s (cSt) max.

Flow direction:

Fixed

Mounting position:

Optional, preferably with solenoid upright

Fluid temperature:

-10°C to +90°C max.

Ambient temperature:

+50°C max.

Consult our Technical Service for use below +2°C

Materials

Body: brass

Seat seal: NBR (Perbunan)

Internal parts: stainless steel, PVDF

For contaminated fluids installation of an upstream filter is recommended.

Orifice (mm)	Port size	Operating pressure (bar)	kv value m ³ /h*	Total weight (kg)	Type d.c. or a.c. solenoid
8	G 1/4	0,1 ... 16	1,90	0,47	8240000xxxx*****
10	G 3/8	0,1 ... 16	3,00	0,45	8240100xxxx*****
12	G 1/2	0,1 ... 16	3,80	0,50	8240200xxxx*****
20	G 3/4	0,1 ... 16	6,10	0,65	8240300xxxx*****
25	G 1	0,1 ... 16	9,50	0,95	8240400xxxx*****
32	G 1¼	0,1 ... 10 (16**)	23,00	2,73	8240500xxxx*****
40	G 1½	0,1 ... 10 (16**)	25,00	2,53	8240600xxxx*****
50	G 2	0,1 ... 10 (16**)	41,00	3,85	8240700xxxx*****
8	1/4 NPT	0,1 ... 16	1,90	0,47	8241000xxxx*****
10	3/8 NPT	0,1 ... 16	3,00	0,45	8241100xxxx*****
12	1/2 NPT	0,1 ... 16	3,80	0,50	8241200xxxx*****
20	3/4 NPT	0,1 ... 16	6,10	0,65	8241300xxxx*****
25	1 NPT	0,1 ... 16	9,50	0,95	8241400xxxx*****
32	1¼ NPT	0,1 ... 10 (16**)	23,00	2,73	8241500xxxx*****
40	1½ NPT	0,1 ... 10 (16**)	25,00	2,53	8241600xxxx*****
50	2 NPT	0,1 ... 10 (16**)	41,00	3,85	8241700xxxx*****

xxxx Insert solenoid codes from table below. ***** Insert voltage codes from table below

* Cv (US) ≈ kv x 1,2

** Operating pressure max. 16 bar with solenoid 9151.

Type-tested up to 25 mm orifice size in accordance with DIN EN 60730-2-8

Solenoid valves

Test institute

TÜV Rheinland / Brandenburg



Options selector

824XX *** *****

Alternative versions	Substitute
Normally open (NO), from G 1¼ with solenoid 9151; 0,1 to 16 bar	01
Manual override	02
Seat seal material FPM, max. fluid temperature +110°C	03
Seat seal material EPDM, for hot water, max. fluid temperature +110°C; 0,3 to 16 bar up to 25 mm, 0,3 to 10 bar from 32 mm	14
Bistable solenoid system; Current pulse min. 30 ms; only for d.c. 6, 12 and 24 V	50

Voltage	Substitute
24 V d.c.	02400
24 V a.c. 50 Hz	02450
110 V a.c. 50 Hz	11050
230 V a.c. 50 Hz	23050

Other voltages on request

Solenoid	Substitute
d.c./a.c. (G¼ to G2)	9101
d.c./a.c. (G1¼ to G2)	9151
EEx m II T4	9136

